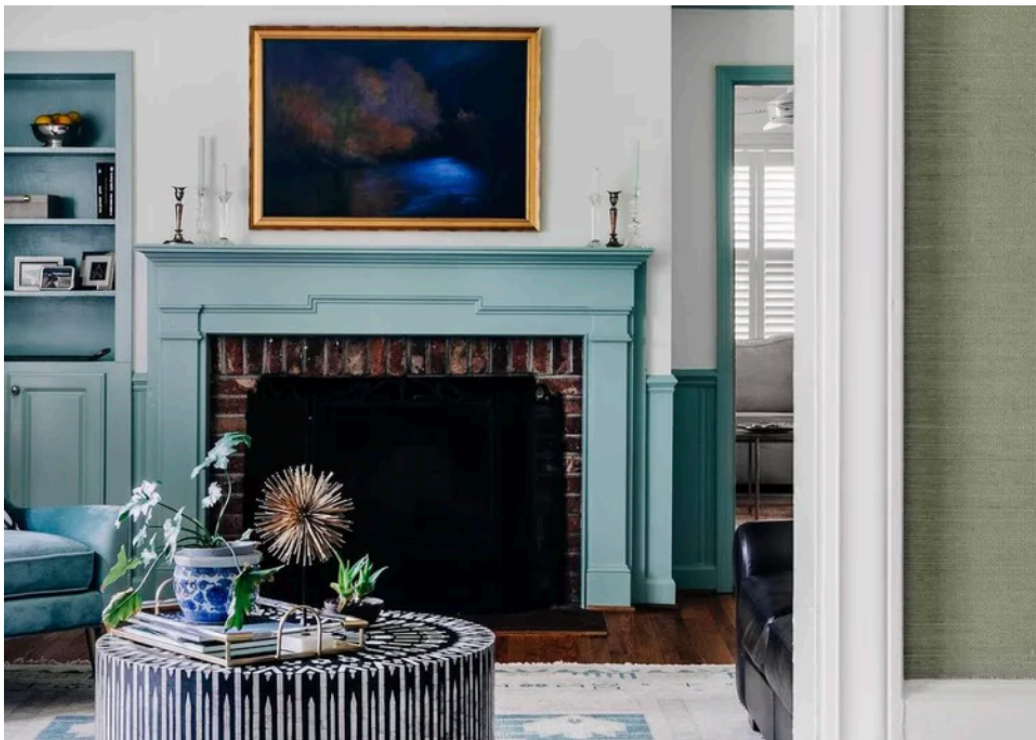


Should You Paint Trim Darker Than Walls? We Asked Designers If That Trend Will Last

By [SARAH LYON](#) | Published on 10/17/24



 Design by [Taylor Johnson](#) / Photo by [Emily Bolt](#)

Painting a room's trim darker than the wall color is trending at the moment, and designers are loving this look for a variety of reasons, which we will explore in detail below.

While there are a multitude of colors that you can choose from when [painting the trim](#) in your home, there are some common best practices that you will in mind no matter which direction you go, so we asked designers to share their best tips.



📷 Design by [Taylor Johnson](#) / Photo by [Emily Bolt](#)

MEET THE EXPERT

- [Ashley McCollum](#) is the PPG color expert for Glidden.
- [Tracy Morris](#) is the founder of Tracy Morris Design.
- [Emily Kantz](#) is the color marketing manager at Sherwin-Williams.

Reasons Why You Should Paint Trim Darker Than Walls

- **It highlights architectural features.** If you're looking to enhance the architectural features within a space, [painting the trim darker](#) then your wall color is a smart idea—doing so will highlight elements that are already special, including crown molding, baseboards, window frames, and more within a space, Ashley McCollum, the PPG color expert for Glidden, explains.

- **It creates depth and dimension.** McCollum cites an increased feeling of depth and dimension in a room as another outcome of painting trim darker than the wall color. "It can make the walls appear more recessed, giving a sense of visual interest and complexity," she says.
- **It's a nice alternative to the classic accent wall.** Some people view painting the trim within a room as an alternative to the accent wall that is still full of character, Emily Kantz, color marketing manager at Sherwin-Williams, explains.



 [@we3dwellingsokc](https://www.instagram.com/we3dwellingsokc) / Instagram

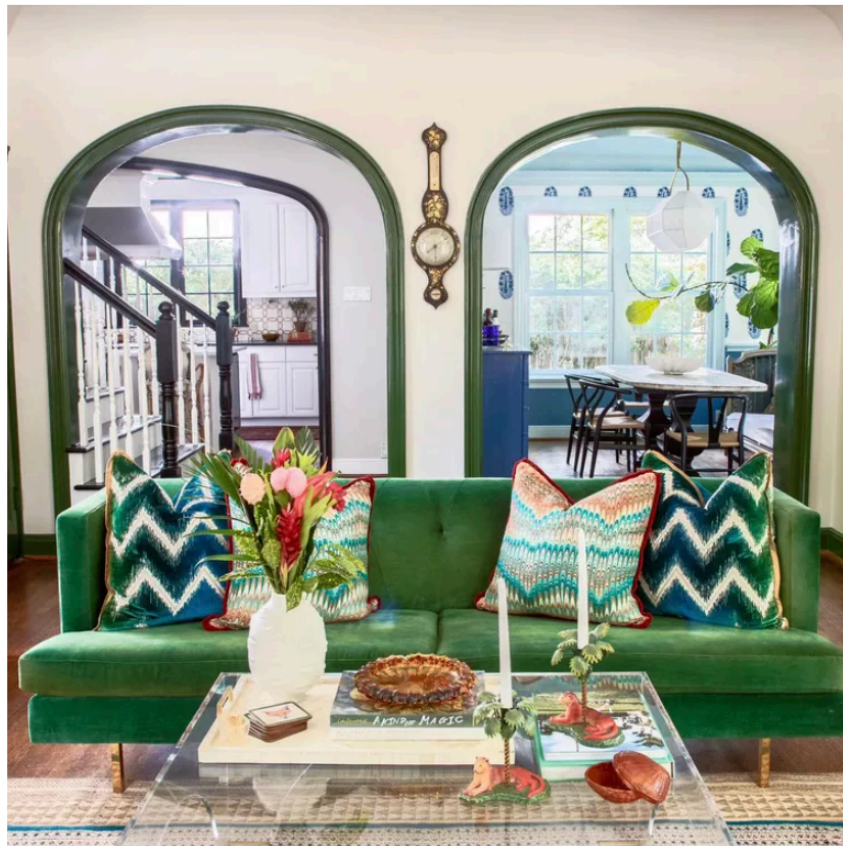
Designer Tips

Look to Your Wallpaper

Tracy Morris, the founder of Tracy Morris Design, likes to paint a room's trim darker than its wall color when designing spaces that [incorporate wallpaper](#). She recommends pulling the trim color either from the wallpaper pattern itself or from the other furniture within a room.

"This way, you will know that the color will complement the other pieces in the room," she says.

Consider Your Desired Mood



[@stone_fox_interiors](#) / Instagram

The exact color pairing that you select for the trim and wall colors in a given room will all depend on the mood that you are trying to evoke within the space. For example, those looking to go bold may wish to pair white walls with black trim, Kantz explains.

However, this is by no means the only approach; you can employ the strategy of weaving darker trim into a room without opting for a traditionally dark paint color if you're more inclined to stick with neutral tones.

"I also love the idea of a more understated approach, using an off-white wall color and going a few shades deeper in a neutral that looks intentional, brings a sense of depth within the space, and yet does not overwhelm the room," she says.

Look to Other Nearby Finishes

If you're unsure which room of the home to tackle as you embrace this trend, note that you may wish to start with a powder room, dressing room, or another space of that nature. Kantz notes that painting trims a dark color can be easier within a smaller, enclosed room. When working with a larger, open-concept layout, she offers some additional considerations.

"Make sure you select a trim that will work with the other finishes and materials throughout the other rooms, specifically the flooring," Kantz says.

She also encourages individuals with an open floor plan to think about how their trim color will look in relation to any nearby kitchen cabinetry. When you stick to a room with a door that fully closes, you won't have to keep this consideration in mind, which can open you up to a greater number of paint color options.

Honor Your Architectural Style

The trim you choose should also coordinate with your [home's overall architectural style](#) to ensure a cohesive look.

"Different styles may have specific color palettes and design conventions," McCollum says. "Consider how the chosen trim color aligns with the overall style and character of the room."

For example, Victorian homes are characterized by the use of bright, eye-catching colors, while mid-century modern spaces are generally rooted in warm, earthier, or neutral tones.